

# CUSRES Customs Response Message

## Introduction:

This Customs Response Message (CUSRES) permits the transfer of data from a customs administration:

- to acknowledge the receipt of the message - to indicate whether the information received is correct or if there are errors (i.e. accepted without errors, accepted with errors, rejected, etc.) - to inform the sender of the status of the customs declaration (i.e. goods released, goods for examination, documents required, etc.)
- to transmit additional information as agreed between parties (i.e. tax information, quantity information, etc.)
- to respond to batched messages (i.e. CUSDEC, CUSCAR, CUSREP, CUSEXP).

Note: this message is not meant to replace the functionality of the CONTRL message.

## Notes:

This guideline is a joint development of the following Portuguese Port Authorities:

- Administração dos Portos do Douro e Leixões, S.A. - APDL
- Administração do Porto de Lisboa, S.A. - APL
- Administração do Porto de Sines, S.A. - APS

For the elaboration of this document, the requirements of the Portuguese Customs were also carefully considered. In the future, other Portuguese Port Authorities may adopt this guideline.

The goal is to provide the definition of the CUSRES message to be used in the transmission of Customs validation report to the Port Authorities.

The information provided will be routed to the shipping agents according to the rules, processes and procedures described in a specific document. For this reason, certain data must be present in order to comply with Customs requirements, even if that implies changes in current implementations and/or procedures.

This guideline was elaborated considering the following references:

- UN/EDIFACT D.97A CUSRES
- UN/EDIFACT Data Element Codes D.00B
- UN/ECE Recommendation 7 - Numerical Representation of Dates, Time, and Periods of Time (Doc. Ref. TRADE/WP.4/INF.108)
- UN/ECE Recommendation 19 (2nd edition) - Codes for Modes of Transport (Doc. Ref. TRADE/CEFACT/2001/19)
- Guia do Utilizador - Resposta ao Manifesto - Subset da Mensagem CUSRES versão 3.3 Maio de 2000
- NSTI/NCTS Declaração de Trânsito Informatizada - Documento Auxiliar ao Guia de Implementação das Mensagens EDI Versão 3, Anexo - Códigos a Utilizar, Portuguese Customs,

The fact that Data Element Codes are from a newer Edifact Directory (D.00B) is because many useful codes for this implementation were introduced. This way it minimizes the need of temporary local codes.

Note for Date/Time formats. The usual format for this information is CCYYMMDDHHMM. But as several shipping agents use application systems belonging to the carriers they represent, usually in different geographical locations, it is also possible the usage of the format CCYYMMDDHHMMZZZ. This way

## Common Platform - Manifest Response Message Format - Version 1.2c

Date/Time information can include the UTC time zone. Refer to ITIGG Recommendation D4/G23 and UN/ECE Recommendation 7.

Note for References. Associated with a document many references may apply. Several reasons can be behind this: number of parties involved, legal restrictions, operational requirements, etc. Also, sometimes these references are not applied to the document on the same moment. So a specific date may be closely related with a certain reference. In this implementation the procedure of using the RFF segment to state as much as possible references and theirs respective date (when RFF and DTM are structured as a group) was used. This way it was tried to avoid the dispersion of references by several different segments, keep each reference associated with its date (when it applies), allow several references to coexist with the same degree of importance, avoid concatenations of several references of different nature and avoid the need to impose the partners series of numbers. By allowing such a degree of freedom, where different entities can issue a same reference number, references related to the several objects (documents, vessel calls, previous messages, etc) will be identified by a composite key made by the reference itself, its associated date and the issuer. Remark these pieces of information are to be sent in the appropriate segments.

This guideline resulted from the balance of all opinions, remarks, restrictions and reference sources.

In the past, APL implemented an CUSRES guideline that is presently being used in the Lisbon port community. For that reason certain objects (segment groups, segments, composites, elements and codes) will be kept in this guideline only to provide backward compatibility. These situations will be noted in the objects. It is strongly recommended not to adopt this objects in new implementations. They will not generate any error situation in order to allow current implementations to keep working. These objects will be marked as Optional.

In the same line of thought, newer objects will be activated. These objects will also be marked as Optional. It is strongly recommended the usage of these objects by newer implementations and their adoption by current implementations as soon as possible. The exception is for objects that are activated due to Customs requirements. In these cases they have to be adopted. Some new objects also provide ways for the implementation of new processes that may add value to all partners in the port communities. This does not mean that these processes already exist, mainly because other actions outside this implementation have to be taken and other data sources have to be established. What this means is that an additional improvement to business activities in general are potentiated if the partners adopt the usage of these new objects.

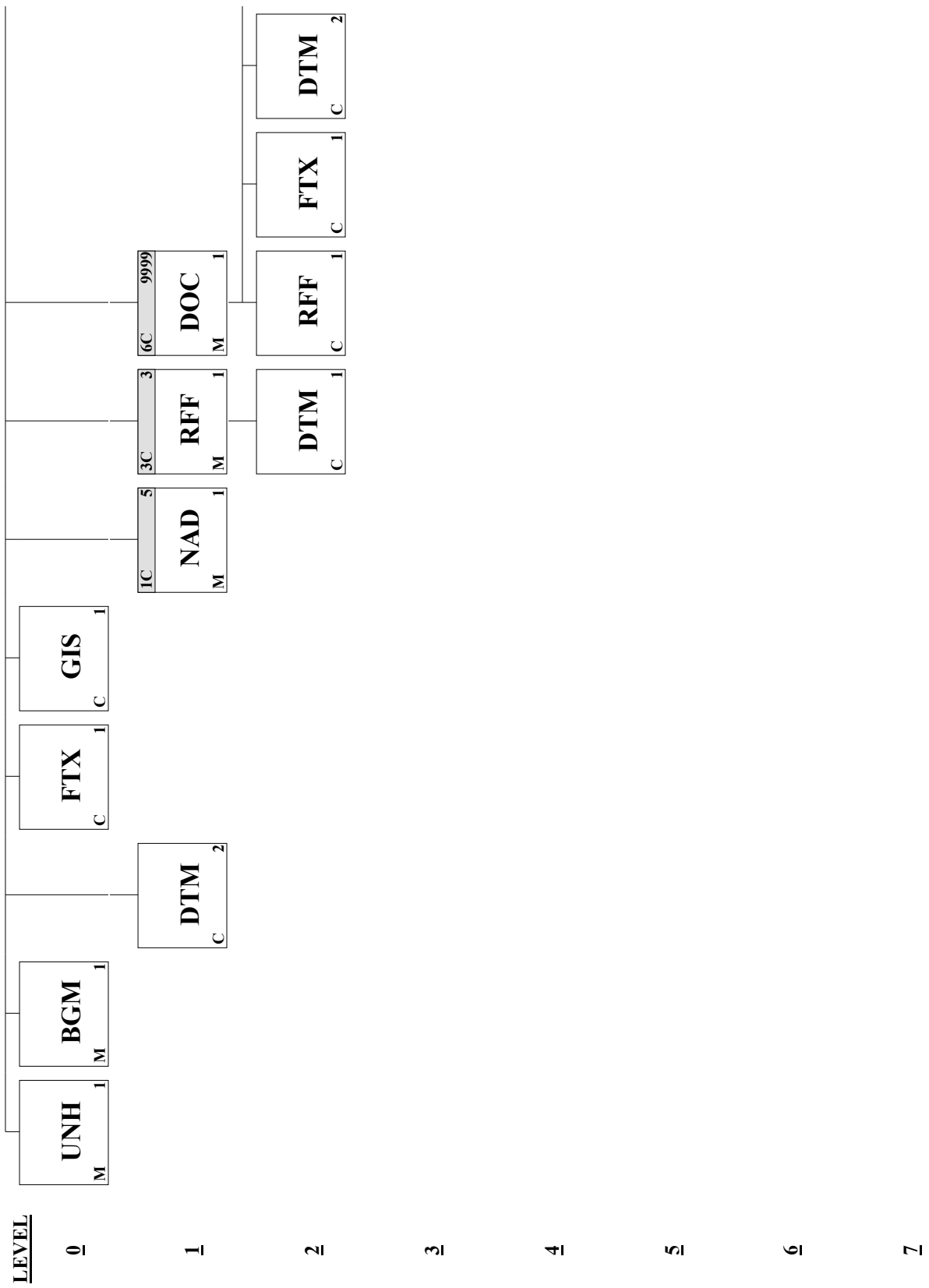
Usage Indicators in this document follow ITIGG Recommendation D4/G44.

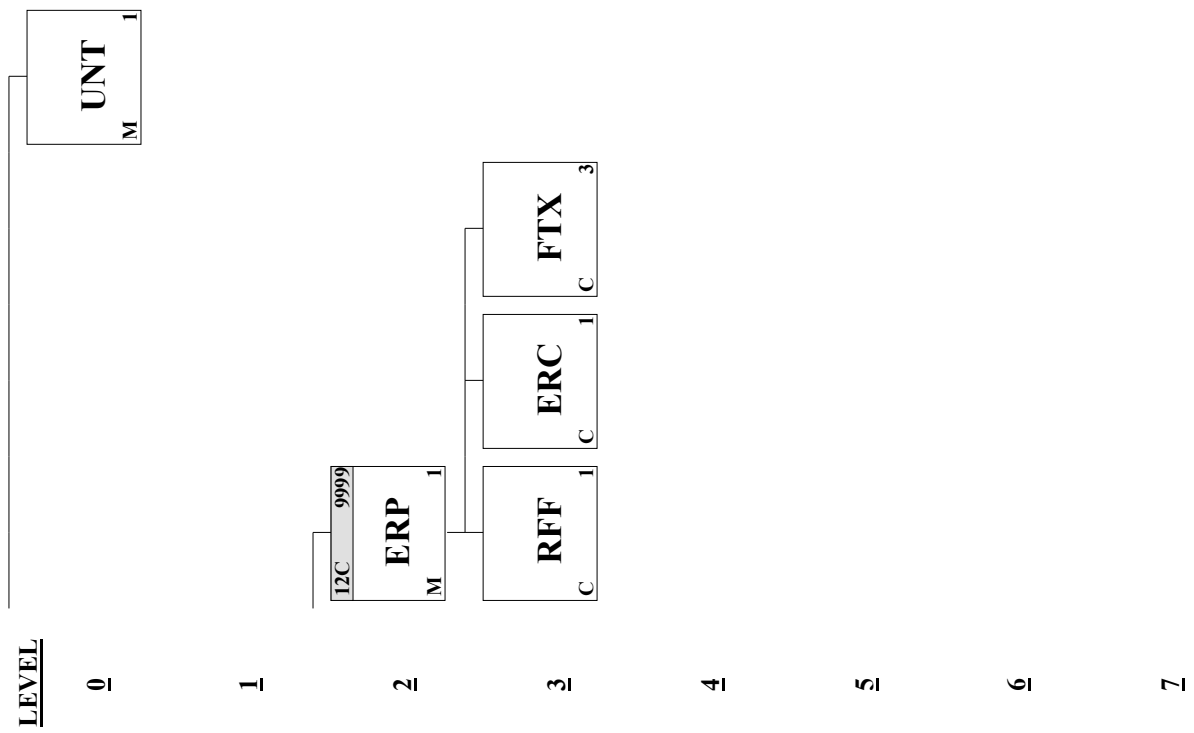
<u>Page No.</u>	<u>Pos. No.</u>	<u>Seg. ID</u>	<u>Name</u>	<u>Base Guide</u>	<u>User Status</u>	<u>Max.Use</u>	<u>Group Repeat</u>	<u>Notes and Comments</u>
6	0010	UNH	Message Header	M	M	1		
8	0020	BGM	Beginning of Message	M	M	1		
10	0030	DTM	Date/Time/Period	C	O	2		
12	0040	FTX	Free Text	C	O	1		
14	0070	GIS	General Indicator	C	O	1		
	0090		Segment Group 1: NAD	C	R		5	
16	0100	NAD	Name and Address	M	M	1		
	0140		Segment Group 3: RFF-DTM	C	R		3	
20	0150	RFF	Reference	M	M	1		
22	0160	DTM	Date/Time/Period	C	O	1		
	0270		Segment Group 6: DOC-RFF-FTX-DTM-SG12	C	R		9999	
24	0280	DOC	Document/Message Details	M	M	1		

Common Platform - Manifest Response Message Format - Version 1.2c

26	0300	RFF	Reference	C	R	1
28	0320	FTX	Free Text	C	R	1
30	0350	DTM	Date/Time/Period	C	R	2
	0560		Segment Group 12: ERP-RFF-ERC-FTX	C	R	9999
33	0570	ERP	Error Point Details	M	M	1
36	0580	RFF	Reference	C	O	1
37	0590	ERC	Application Error Information	C	O	1
38	0600	FTX	Free Text	C	O	3
40	0650	UNT	Message Trailer	M	M	1

Common Platform - Manifest Response Message Format - Version 1.2c





**Segment:** **UNH** Message Header  
**Position:** 0010  
**Group:**  
**Level:** 0  
**Usage:** Mandatory  
**Max Use:** 1  
**Purpose:** A service segment starting and uniquely identifying a message. The message type code for the Customs response message is CUSRES.  
 Note: Customs response messages conforming to this document must contain the following data in segment UNH, composite S009:  
 Data element 0065 CUSRES 0052 D 0054 97A 0051  
 UN

**Dependency Notes:**

**Semantic Notes:**

**Comments:**

**Notes:** Example: Message envelope number "1357924680", type "CUSRES", UN/Edifact directory "D97A"

UNH+1357924680+CUSRES:D:97A:UN'

**Data Element Summary**

<u>Data Element</u>	<u>Component Element</u>	<u>Name</u>	<u>Base Attributes</u>	<u>User Attributes</u>
0062		<b>MESSAGE REFERENCE NUMBER</b>	<b>M an..14</b>	<b>M</b>
		Unique message reference assigned by the sender. Number assigned by the transmitter. It will not be used for business purposes. It is suggested to follow the format "CCCCCCAAAASSSS" where - CCCCCC user code - AAAA year (4-digit) - SSSSS sequential number		
S009		<b>MESSAGE IDENTIFIER</b>	<b>M</b>	<b>M</b>
		Identification of the type, version etc. of the message being interchanged.		
	0065	<b>Message type identifier</b>	<b>M an..6</b>	<b>M</b>
		Code identifying a type of message and assigned by its controlling agency. CUSRES Customs response message A code to identify the customs response message.		
	0052	<b>Message type version number</b>	<b>M an..3</b>	<b>M</b>
		Version number of a message type. D Draft version/UN/EDIFACT Directory Message approved and issued as a draft message (Valid for directories published after March 1993 and prior to March 1997). Message approved as a standard message (Valid for directories published after March 1997).		
	0054	<b>Message type release number</b>	<b>M an..3</b>	<b>M</b>

Common Platform - Manifest Response Message Format - Version 1.2c

Release number within the current message type version number (0052).

97A Release 1997 - A

Message approved and issued in the first 1997 release of the UNTDID (United Nations Trade Data Interchange Directory).

<b>0051</b>	<b>Controlling agency</b>	<b>M an..2 M</b>
	Code identifying the agency controlling the specification, maintenance and publication of the message type.	
	UN UN/ECE/TRADE/WP.4	
	United Nations Economic UN Economic Commission for Europe (UN/ECE), Committee on the development of trade (TRADE), Working Party on facilitation of international trade procedures (WP.4).	
<b>0057</b>	<b>Association assigned code</b>	<b>C an..6 O</b>
	Code, assigned by the association responsible for the design and maintenance of the message type concerned, which further identifies the message.	
<b>0068</b>	<b>COMMON ACCESS REFERENCE</b>	<b>C an..35 X</b>
	Reference serving as a key to relate all subsequent transfers of data to the same business case or file.	
<b>S010</b>	<b>STATUS OF THE TRANSFER</b>	<b>C X</b>
	Statement that the message is one in a sequence of transfers relating to the same topic.	
<b>0070</b>	<b>Sequence message transfer number</b>	<b>M n..2 X</b>
	Number assigned by the sender indicating that the message is an addition or change of a previously sent message relating to the same topic.	
<b>0073</b>	<b>First/last sequence message transfer indication</b>	<b>C a1 X</b>
	Indication used for the first and last message in a sequence of the same type of message relating to the same topic.	

**Segment:** **BGM** Beginning of Message  
**Position:** 0020  
**Group:**  
**Level:** 0  
**Usage:** Mandatory  
**Max Use:** 1  
**Purpose:** A segment identifying the type and the reference number of the message to which the CUSRES is a response.

**Dependency Notes:**

**Semantic Notes:**

**Comments:**

**Notes:** Example: Document response message number: "23451999" stating that the responded message was accepted.

BGM+962+23451999+11+AP'

**Data Element Summary**

<u>Data Element</u>	<u>Component Element</u>	<u>Name</u>	<u>Base Attributes</u>	<u>User Attributes</u>
C002		<b>DOCUMENT/MESSAGE NAME</b>	C	R
		Identification of a type of document/message by code or name. Code preferred.		
	1001	<b>Document/message name, coded</b>	C an..3	R
		Document/message identifier expressed in code.		
		962 Document response (Customs)		
		Document response message to permit the transfer of data from Customs to the transmitter of the previous message.		
	1131	<b>Code list qualifier</b>	C an..3	X
	Identification of a code list.			
C106	3055	<b>Code list responsible agency, coded</b>	C an..3	X
		Code identifying the agency responsible for a code list.		
	1000	<b>Document/message name</b>	C an..35	X
		Plain language identifier specifying the function of a document/message.		
		<b>DOCUMENT/MESSAGE IDENTIFICATION</b>	C	R
		Identification of a document/message by its number and eventually its version or revision.		
	1004	<b>Document/message number</b>	C an..35	R
	Reference number assigned to the document/message by the issuer.			
C106	1056	<b>Version</b>	C an..9	X
		To specify the version number or name of an object.		
	1060	<b>Revision number</b>	C an..6	X
	To specify a revision number.			
1225		<b>MESSAGE FUNCTION, CODED</b>	C an..3	R
	Code indicating the function of the message.			



	11	Response	
		Message responding to a previous message or document.	
<b>4343</b>	<b>RESPONSE TYPE, CODED</b>	<b>C an..3</b>	<b>R</b>
		Code specifying the type of acknowledgment required or transmitted.	
	AJ	Pending	
		Indication that the referenced offer or transaction (e.g. cargo booking or quotation request) is being dealt with.	
	AP	Accepted	
		Indication that the referenced offer or transaction (e.g., cargo booking or quotation request) has been accepted.	
	CA	Conditionally accepted	
		Indication that the referenced offer or transaction (e.g., cargo booking or quotation request) has been accepted under conditions indicated in this message.	
		Conditions are expressed in segment group 12.	
	RE	Rejected	
		Indication that the referenced offer or transaction (e.g., cargo booking or quotation request) is not accepted.	

**Segment:** **DTM** Date/Time/Period  
**Position:** 0030  
**Group:**  
**Level:** 1  
**Usage:** Conditional (Optional)  
**Max Use:** 2  
**Purpose:** A segment identifying the relevant dates and times in the message. For example, payment date.

**Dependency Notes:**

**Semantic Notes:**

**Comments:**

**Notes:**

The second usage is to give at what time the message was placed in the mailbox by the sender when the receiver is a port authority. This is, the time at which it was effectively available to the receiver from the sender. This second usage applies only to the relation between the port authorities and the agents. In this case DE:2005 will be '243'.

Example: Date the message was issued: "2003/10/09 - 14:30"

DTM+137:200310091430:203'

Example: Date the message was issued: "2003/10/08 - 15:25 UTC+3". Attention that in this case the defined escape character must be used in the date/time format, if the time zone is positive in relation to GMT. If the escape character is '?' then

DTM+137:200310081525?+03:303'

**Data Element Summary**

<u>Data Element</u>	<u>Component Element</u>	<u>Name</u>	<u>Base Attributes</u>	<u>User Attributes</u>
C507		<b>DATE/TIME/PERIOD</b>	<b>M</b>	<b>M</b>
		Date and/or time, or period relevant to the specified date/time/period type.		
	<b>2005</b>	<b>Date/time/period qualifier</b>	<b>M an..3</b>	<b>M</b>
		Code giving specific meaning to a date, time or period.		
		137 Document/message date/time (2006) Date/time when a document/message is issued. This may include authentication.		
		243 Transmission date/time of document		
	<b>2380</b>	<b>Date/time/period</b>	<b>C an..35</b>	<b>O</b>
		The value of a date, a date and time, a time or of a period in a specified representation.		
	<b>2379</b>	<b>Date/time/period format qualifier</b>	<b>C an..3</b>	<b>O</b>
		Specification of the representation of a date, a date and time or of a period.		
		203 CCYYMMDDHHMM Calendar date including time with minutes: C=Century; Y=Year; M=Month; D=Day; H=Hour; M=Minutes.		

Common Platform - Manifest Response Message Format - Version 1.2c

303

CCYYMMDDHHMMZZZ

See 203 plus Z=Time zone.

**Segment:** **FTX** Free Text  
**Position:** 0040  
**Group:**  
**Level:** 0  
**Usage:** Conditional (Optional)  
**Max Use:** 1  
**Purpose:** A segment stating information in unsolicited clear text.  
**Dependency Notes:**  
**Semantic Notes:**  
**Comments:**

**Notes:** This segment is used in order to inform the agent about the status of the Customs means of transport id ("Contramarca").

Example: Customs process closed.

FTX+CUS+++FEC'

#### Data Element Summary

<u>Data Element</u>	<u>Component Element</u>	<u>Name</u>	<u>Base Attributes</u>	<u>User Attributes</u>
4451		<b>TEXT SUBJECT QUALIFIER</b> Code specifying subject of a free text.	<b>M an..3</b>	<b>M</b>
	CUS	Customs declaration information Note contains customs declaration information.		
4453		<b>TEXT FUNCTION, CODED</b> Code specifying how to handle the text.	<b>C an..3</b>	<b>X</b>
C107		<b>TEXT REFERENCE</b> Coded reference to a standard text and its source.	<b>C</b>	<b>X</b>
	4441	<b>Free text identification</b> Free text in coded form.	<b>M an..17</b>	<b>X</b>
	1131	<b>Code list qualifier</b> Identification of a code list.	<b>C an..3</b>	<b>X</b>
	3055	<b>Code list responsible agency, coded</b> Code identifying the agency responsible for a code list.	<b>C an..3</b>	<b>X</b>
C108		<b>TEXT LITERAL</b> Free text; one to five lines.	<b>C</b>	<b>O</b>
	4440	<b>Free text</b> Free text field available to the message sender for information.	<b>M an..70</b>	<b>M</b>
		ACT Active After the actual arrival of the means of transport and all provided data is valid.		
		ANU Annulled After nullifying the Customs means of transport process id ("Contramarca").		

Common Platform - Manifest Response Message Format - Version 1.2c

	FEC	Closed		
		After the actual departure of means of transport.		
	PAC	Pre-Active		
		After the actual arrival of the means of transport, but data provided by the agent is not completely valid (e.g. some information is missing or incorrect).		
	PRV	Provisional		
		Before the actual arrival of means of transport.		
	ULT	Ultimated		
		After all processes related with the Customs means of transport process id ("Contramarca") are closed, namely after all goods were accounted.		
<b>4440</b>	<b>Free text</b>		<b>C an..70</b>	<b>X</b>
		Free text field available to the message sender for information.		
<b>4440</b>	<b>Free text</b>		<b>C an..70</b>	<b>X</b>
		Free text field available to the message sender for information.		
<b>4440</b>	<b>Free text</b>		<b>C an..70</b>	<b>X</b>
		Free text field available to the message sender for information.		
<b>4440</b>	<b>Free text</b>		<b>C an..70</b>	<b>X</b>
		Free text field available to the message sender for information.		
<b>3453</b>	<b>LANGUAGE, CODED</b>		<b>C an..3</b>	<b>X</b>
		Code of language (ISO 639-1988).		

**Segment:** **GIS** General Indicator  
**Position:** 0070  
**Group:**  
**Level:** 0  
**Usage:** Conditional (Optional)  
**Max Use:** 1  
**Purpose:** A segment identifying the various customs processing indicators. For example, cargo released, cargo held, examination required, earlier message accepted or rejected, etc.

**Dependency Notes:**

**Semantic Notes:**

**Comments:**

**Notes:** *For backward compatibility. This segment is being discontinued in the Edifact's directories for this message.*

*The information that used this segment, expressed in element 7365, will be provided in BGM:4343, where value '1' in GIS is treated like 'AP' in BGM and value '2' is treated like 'RE'.*

**Data Element Summary**

<u>Data Element</u>	<u>Component Element</u>	<u>Name</u>	<u>Base Attributes</u>	<u>User Attributes</u>
C529		<b>PROCESSING INDICATOR</b> Type of process indication.	<b>M</b>	<b>M</b>
	7365	<b>Processing indicator, coded</b> Identifies the value to be attributed to indicators required by the processing system.	<b>M an..3</b>	<b>M</b>
		1 Message content accepted Content of message is accepted.		
		2 Message content rejected with comment Content of message is rejected, with comment.		
	1131	<b>Code list qualifier</b> Identification of a code list.	<b>C an..3</b>	<b>X</b>
	3055	<b>Code list responsible agency, coded</b> Code identifying the agency responsible for a code list.	<b>C an..3</b>	<b>X</b>
	7187	<b>Process type identification</b> Specification of a process or subprocess.	<b>C an..17</b>	<b>X</b>

**Group:** **NAD** Segment Group 1: Name and Address  
**Position:** 0090  
**Group:**  
**Level:** 1  
**Usage:** Conditional (Required)  
**Max Use:** 5  
**Purpose:** A group of segments identifying party details, including contact and communication contact information.  
**Notes:** This group is to provide information about the sender and the receiver of the message, and the Customs Office that is actually replying.

**Segment Summary**

	<b>Pos.</b>	<b>Seg.</b>		<b>Req.</b>	<b>Max.</b>	<b>Group:</b>
	<b><u>No.</u></b>	<b><u>ID</u></b>	<b><u>Name</u></b>	<b><u>Des.</u></b>	<b><u>Use</u></b>	<b><u>Repeat</u></b>
M	0100	NAD	Name and Address	M	1	

**Segment:** **NAD** Name and Address  
**Position:** 0100 (Trigger Segment)  
**Group:** SG1  
**Level:** 1  
**Usage:** Mandatory  
**Max Use:** 1  
**Purpose:** A segment to identify the name and/or address of the party related to all information at the lower level of the message. For example, the importer.

**Dependency Notes:**

**Semantic Notes:**

**Comments:**

**Notes:**

Segment with the identification of the party.

If the party is the Customs Office (DE:3035 is 'CM') then DE:3039 will have the code id corresponding to the Customs Office and DE:1131 will have '113'. Code list of customs locations provided in a separate document.

Otherwise, DE:3039 will have the Tax Payer identification.

Example: Customs Office of Leixões

NAD+CM+PTLEI340:113:155'

**Data Element Summary**

<u>Data Element</u>	<u>Component Element</u>	<u>Name</u>	<u>Base Attributes</u>	<u>User Attributes</u>
3035		<b>PARTY QUALIFIER</b>	<b>M an..3</b>	<b>M</b>
		Code giving specific meaning to a party.		
	AE	Declarant's agent/representative		
		Any natural or legal person who makes a declaration to an official body on behalf of another natural or legal person, where legally permitted (CCC).		
	CA	Carrier		
		(3126) Party undertaking or arranging transport of goods between named points.		
	CM	Customs		
		Identification of customs authority relevant to the transaction or shipment.		
	MR	Message recipient		
	MS	Document/message issuer/sender		
		Issuer of a document and/or sender of a message.		
C082		<b>PARTY IDENTIFICATION DETAILS</b>	<b>C</b>	<b>O</b>
		Identification of a transaction party by code.		
	3039	<b>Party id. identification</b>	<b>M an..35</b>	<b>M</b>
		Code identifying a party involved in a transaction.		



<b>1131</b>	<b>Code list qualifier</b>	<b>C</b>	<b>an..3</b>	<b>O</b>
	Identification of a code list.			
	If NAD:3035 is 'CM' send code according to list in pasges 71-72 of NSTI/NCTS Declaração de Trânsito Informatizada - Documento Auxiliar ao Guia de Implementação das Mensagens EDI Versão 3, Anexo - Códigos a Utilizar.			
	If NAD:3035='CA' then place the number place the number given to the Portuguese Customs at the moment of the protocol signature preceeded by the ISO country code (2 digit) corresponding to the nationality of the carrier.			
	52	Value added tax identification		
		Value added tax identification code.		
		Use when the entity identified in DE:3039 is not Portuguese. Portuguese Customs code VIES.		
	53	Passport number		
		Number assigned to a passport.		
		Portuguese Customs code P.		
	113	Customs office		
		Customs administrative unit competent for the performance of Customs formalities, and the premises or other areas approved for the purpose by the competent authorities (CCC).		
		use when the code in DE:3039 identifies a Customs Office, independent of its nationality.		
	167	Tax party identification		
		Code assigned by a tax authority to identify a party.		
		to use when the entity is Portuguese. Portuguese Customs code NIF.		
	174	Citizen identification		
		Portuguese Customs code BI.		
	Z02	Other		
		Use this code to state that the id type in DE:3039 is not included in the other types listed in this element and the entity is not Portuguese.		
	Z03	Company Identification Number		
		use when the entity identified in DE:3039 is not Portuguese. Portuguese Customs code NIPC.		
<b>3055</b>	<b>Code list responsible agency, coded</b>	<b>C</b>	<b>an..3</b>	<b>O</b>
	Code identifying the agency responsible for a code list.			
	155	PT, Portuguese Customs		
<b>C058</b>	<b>NAME AND ADDRESS</b>	<b>C</b>		<b>X</b>
	Unstructured name and address: one to five lines.			
<b>3124</b>	<b>Name and address line</b>	<b>M</b>	<b>an..35</b>	<b>X</b>
	Free form name and address description.			
<b>3124</b>	<b>Name and address line</b>	<b>C</b>	<b>an..35</b>	<b>X</b>
	Free form name and address description.			
<b>3124</b>	<b>Name and address line</b>	<b>C</b>	<b>an..35</b>	<b>X</b>

Common Platform - Manifest Response Message Format - Version 1.2c

		Free form name and address description.		
	<b>3124</b>	<b>Name and address line</b>	<b>C an..35</b>	<b>X</b>
		Free form name and address description.		
	<b>3124</b>	<b>Name and address line</b>	<b>C an..35</b>	<b>X</b>
		Free form name and address description.		
<b>C080</b>		<b>PARTY NAME</b>	<b>C</b>	<b>X</b>
		Identification of a transaction party by name, one to five lines. Party name may be formatted.		
	<b>3036</b>	<b>Party name</b>	<b>M an..35</b>	<b>X</b>
		Name of a party involved in a transaction.		
	<b>3036</b>	<b>Party name</b>	<b>C an..35</b>	<b>X</b>
		Name of a party involved in a transaction.		
	<b>3036</b>	<b>Party name</b>	<b>C an..35</b>	<b>X</b>
		Name of a party involved in a transaction.		
	<b>3036</b>	<b>Party name</b>	<b>C an..35</b>	<b>X</b>
		Name of a party involved in a transaction.		
	<b>3036</b>	<b>Party name</b>	<b>C an..35</b>	<b>X</b>
		Name of a party involved in a transaction.		
	<b>3045</b>	<b>Party name format, coded</b>	<b>C an..3</b>	<b>X</b>
		Specification of the representation of a party name.		
<b>C059</b>		<b>STREET</b>	<b>C</b>	<b>X</b>
		Street address and/or PO Box number in a structured address: one to three lines.		
	<b>3042</b>	<b>Street and number/p.o. box</b>	<b>M an..35</b>	<b>X</b>
		Street and number in plain language, or Post Office Box No.		
	<b>3042</b>	<b>Street and number/p.o. box</b>	<b>C an..35</b>	<b>X</b>
		Street and number in plain language, or Post Office Box No.		
	<b>3042</b>	<b>Street and number/p.o. box</b>	<b>C an..35</b>	<b>X</b>
		Street and number in plain language, or Post Office Box No.		
	<b>3042</b>	<b>Street and number/p.o. box</b>	<b>C an..35</b>	<b>X</b>
		Street and number in plain language, or Post Office Box No.		
<b>3164</b>		<b>CITY NAME</b>	<b>C an..35</b>	<b>X</b>
		Name of a city (a town, a village) for addressing purposes.		
<b>3229</b>		<b>COUNTRY SUB-ENTITY IDENTIFICATION</b>	<b>C an..9</b>	<b>X</b>
		Identification of the name of sub-entities (state, province) defined by appropriate governmental agencies.		
<b>3251</b>		<b>POSTCODE IDENTIFICATION</b>	<b>C an..9</b>	<b>X</b>
		Code defining postal zones or addresses.		
<b>3207</b>		<b>COUNTRY, CODED</b>	<b>C an..3</b>	<b>X</b>
		Identification of the name of a country or other geographical entity as specified in ISO 3166.		

**Group:** **RFF** Segment Group 3: Reference  
**Position:** 0140  
**Group:**  
**Level:** 1  
**Usage:** Conditional (Required)  
**Max Use:** 3  
**Purpose:** A group of segments identifying references, dates and locations related information.  
**Notes:** This group is to send the information related with the Customs means of transport process ("Contramarca") and/or the Port Authority vessel call id (GCP process folder).  
 It is also used to identified the message being acknowledged.

**Segment Summary**

	<b>Pos.</b>	<b>Seg.</b>		<b>Req.</b>	<b>Max.</b>	<b>Group:</b>
	<b><u>No.</u></b>	<b><u>ID</u></b>	<b><u>Name</u></b>	<b><u>Des.</u></b>	<b><u>Use</u></b>	<b><u>Repeat</u></b>
M	0150	RFF	Reference	M	1	
O	0160	DTM	Date/Time/Period	C	1	

**Segment:** **RFF** Reference  
**Position:** 0150 (Trigger Segment)  
**Group:** SG3  
**Level:** 1  
**Usage:** Mandatory  
**Max Use:** 1  
**Purpose:** A segment identifying references (e.g. manifest number).  
**Dependency Notes:**  
**Semantic Notes:**  
**Comments:**

**Notes:** Customs means of transport process identification (DE:1153='AFM'), or the Port Authority vessel call id (DE:1153='ATZ'), and the message being acknowledged (DE:1153='ABO'). This information is reported in DE:1154.

The current format for Customs vessel process id is:

- UN/Locode: 5 characters
- customs office code: 3 digits
- mode of transport code (UN/ECE Rec. 19 - 1 Maritime): 1 digit
- year: 4 digits
- sequential number: 6 digits left padded with zeros

It is recommended that the maximum size for this data element 1154 should be considered.

When the reference is the Port Authority vessel call Id (RFF:C506:1153='ATZ'), then in each the following Ports, the suffixes apply to the reference:

- Port of Leixões: ESC
- Port of Lisboa: LIS
- Port of Sines: SIN

Example: Process 876 issued in 2003 at Leixões Customs office for maritime means of transport.

RFF+AFM:PTLEI34012003000876'

Example: Acknowledge to message ALF8474-2006

RFF+ABO:ALFT8474-2006'

Example: Vessel call id ESC200601326

RFF+ATZ:ESC200601326'

#### Data Element Summary

Data Element	Component Element	Name	Base Attributes	User Attributes
C506		REFERENCE	M	M
		Identification of a reference.		

Common Platform - Manifest Response Message Format - Version 1.2c

<b>1153</b>	<b>Reference qualifier</b>	<b>M</b>	<b>an..3</b>	<b>M</b>
	Code giving specific meaning to a reference segment or a reference number.			
	ABO			Originator's reference
	AFM			Secondary Customs reference
	ATZ			Ship's stay reference number
				Reference number assigned by a port authority to the stay of a vessel in the port.
<b>1154</b>	<b>Reference number</b>	<b>C</b>	<b>an..35</b>	<b>O</b>
	Identification number the nature and function of which can be qualified by an entry in data element 1153 Reference qualifier.			
<b>1156</b>	<b>Line number</b>	<b>C</b>	<b>an..6</b>	<b>X</b>
	Number of the line in the document/message referenced in 1154 Reference number.			
<b>4000</b>	<b>Reference version number</b>	<b>C</b>	<b>an..35</b>	<b>X</b>
	To uniquely identify a reference by its revision number.			

**Segment:** **DTM** Date/Time/Period  
**Position:** 0160  
**Group:** SG3  
**Level:** 2  
**Usage:** Conditional (Optional)  
**Max Use:** 1  
**Purpose:** A segment identifying a date related to the preceding RFF.  
**Dependency Notes:**  
**Semantic Notes:**  
**Comments:**

**Notes:** Date and time when the Customs means of transport process ("Contramarca") was created.

Example: Process created on June, the 10th, 11h43

DTM+171:200306101143:203'

Example: Same as the exemple abova but with timezone information. Attention that in this case the defined escape character must be used in the date/time format, if the time zone is positive in relation to GMT. If the escape character is '?' then

DTM+137:200310081525?+00:303'

#### Data Element Summary

<u>Data Element</u>	<u>Component Element</u>	<u>Name</u>	<u>Base Attributes</u>	<u>User Attributes</u>
C507		<b>DATE/TIME/PERIOD</b>	<b>M</b>	<b>M</b>
		Date and/or time, or period relevant to the specified date/time/period type.		
	<b>2005</b>	<b>Date/time/period qualifier</b>	<b>M an..3</b>	<b>M</b>
		Code giving specific meaning to a date, time or period.		
		171 Reference date/time		
		Date/time on which the reference was issued.		
	<b>2380</b>	<b>Date/time/period</b>	<b>C an..35</b>	<b>O</b>
		The value of a date, a date and time, a time or of a period in a specified representation.		
	<b>2379</b>	<b>Date/time/period format qualifier</b>	<b>C an..3</b>	<b>O</b>
		Specification of the representation of a date, a date and time or of a period.		
		203 CCYYMMDDHHMM		
		Calendar date including time with minutes: C=Century; Y=Year; M=Month; D=Day; H=Hour; M=Minutes.		
		303 CCYYMMDDHHMMZZZ		
		See 203 plus Z=Time zone.		

**Group:** **DOC** Segment Group 6: Document/Message Details  
**Position:** 0270  
**Group:**  
**Level:** 1  
**Usage:** Conditional (Required)  
**Max Use:** 9999  
**Purpose:** A group of segments specifying goods item details including status of goods, related references, package identification, details of transport, relevant parties, contacts, dates and/or times and location, general indicators, measurements, documentary requirements, monetary amounts, currencies and item taxes, fees and duties.  
**Notes:** This group is to provide information about the documents that are being acknowledge and the result of the validation process of each one.

Segment DOC is used to send the identification of the Customs Summary Declaration id. Its status is provided in segment FTX in this group.

The transport document being acknowledged is specified in segment RFF in this group. This reference shall occur only once in the group.

For each transport document several validation rules will be applied. The result is transmitted in the form of codes (to be published in a separate document) by using group 12 and with a description in Portuguese and English.

**Segment Summary**

	<b>Pos.</b>	<b>Seg.</b>		<b>Req.</b>	<b>Max.</b>	<b>Group:</b>
	<b>No.</b>	<b>ID</b>	<b>Name</b>	<b>Des.</b>	<b>Use</b>	<b>Repeat</b>
M	0280	DOC	Document/Message Details	M	1	
R	0300	RFF	Reference	C	1	
R	0320	FTX	Free Text	C	1	
R	0350	DTM	Date/Time/Period	C	2	
	0560		Segment Group 12: Error Point Details	C		9999

**Segment:** **DOC** Document/Message Details  
**Position:** 0280 (Trigger Segment)  
**Group:** SG6  
**Level:** 1  
**Usage:** Mandatory  
**Max Use:** 1  
**Purpose:** A segment to identify the master bill number reported in a multi-consignment message. This segment can also be used to identify the Customs declaration where the CUSRES is responding to multiple declarations.

**Dependency Notes:**

**Semantic Notes:**

**Comments:**

**Notes:**

This segment is to identify the Customs Summary Declaration.

The current format for Customs Summary Declaration id is:

- UN/Locode: 5 characters
- customs office code: 3 digits
- mode of transport code (UN/ECE Rec. 19 - 1 Maritime): 1 digit
- year: 4 digits
- sequential number for Customs vessel process id: 6 digits left padded with zeros
- sequential number for Customs Summary Declaration: 4 digits left padded with zeros

Please note that this format is subject to changes in the future.

Example: Customs Summary Declaration 3 related with Customs vessel process id 876 of 2003 at Leixoes Customs Office.

DOC+355+PTLEI340120030008760003'

**Data Element Summary**

<u>Data Element</u>	<u>Component Element</u>	<u>Name</u>	<u>Base Attributes</u>	<u>User Attributes</u>
C002		DOCUMENT/MESSAGE NAME	M	M
		Identification of a type of document/message by code or name. Code preferred.		
	1001	Document/message name, coded	C an..3	O
		Document/message identifier expressed in code.		
		355 Customs summary declaration without commercial detail, alternate		
		Alternate Customs declaration summary without any commercial transaction details.		
	1131	Code list qualifier	C an..3	X
		Identification of a code list.		
	3055	Code list responsible agency, coded	C an..3	X
		Code identifying the agency responsible for a code list.		
	1000	Document/message name	C an..35	X



Common Platform - Manifest Response Message Format - Version 1.2c

		Plain language identifier specifying the function of a document/message.		
<b>C503</b>	<b>DOCUMENT/MESSAGE DETAILS</b>		<b>C</b>	<b>O</b>
		Identification of document/message by number, status, source and/or language.		
<b>1004</b>	<b>Document/message number</b>		<b>C an..35</b>	<b>O</b>
		Reference number assigned to the document/message by the issuer.		
<b>1373</b>	<b>Document/message status, coded</b>		<b>C an..3</b>	<b>X</b>
		To identify the status of a document/message.		
<b>1366</b>	<b>Document/message source</b>		<b>C an..35</b>	<b>X</b>
		Indication of the source from which the printed information is to be or has been obtained.		
<b>3453</b>	<b>Language, coded</b>		<b>C an..3</b>	<b>X</b>
		Code of language (ISO 639-1988).		
<b>3153</b>	<b>COMMUNICATION CHANNEL IDENTIFIER, CODED</b>		<b>C an..3</b>	<b>X</b>
		Code identifying the type of communication channel being used.		
<b>1220</b>	<b>NUMBER OF COPIES OF DOCUMENT REQUIRED</b>		<b>C n..2</b>	<b>X</b>
		Number of originals or copies of a document stipulated or referred to as being required.		
<b>1218</b>	<b>NUMBER OF ORIGINALS OF DOCUMENT REQUIRED</b>		<b>C n..2</b>	<b>X</b>
		Specification of the number of originals of a stipulated document that are required.		

**Segment:** **RFF** Reference  
**Position:** 0300  
**Group:** SG6  
**Level:** 2  
**Usage:** Conditional (Required)  
**Max Use:** 1  
**Purpose:** A segment identifying a particular reference, e.g. house of bill number, master bill number.

**Dependency Notes:**

**Semantic Notes:**

**Comments:**

**Notes:** This segment is to identify the Transport Document. The identification was provided in segment RFF in segment group 26 inside segment group 19 of the IFCSUM message.

Example: BL number NB234567

RFF+BM:NB234567'

**Data Element Summary**

<u>Data Element</u>	<u>Component Element</u>	<u>Name</u>	<u>Base Attributes</u>	<u>User Attributes</u>
C506		REFERENCE	M	M
		Identification of a reference.		
	1153	Reference qualifier	M an..3	M
		Code giving specific meaning to a reference segment or a reference number.		
		AAM Waybill number Reference number assigned to a waybill, see: 1001 = 700.		
		AEW Empty container bill number Reference number assigned to an empty container bill, see: 1001 = 708.		
		AEX Non-negotiable maritime transport document number Reference number assigned to a sea waybill, see: 1001 = 712.		
		AFA Through bill of lading number Reference number assigned to a through bill of lading, see: 1001 = 761.		
		AFB Cargo manifest number Reference number assigned to a cargo manifest, see: 1001 = 785.		
		AFM Secondary Customs reference		
		BM Bill of lading number Reference number assigned to a bill of lading, see: 1001 = 705.		
		BN Booking reference number [1016] Reference number assigned by the carrier or his agent when cargo space is reserved prior to loading.		

Common Platform - Manifest Response Message Format - Version 1.2c

CT	Contract number Reference number of a contract concluded between parties.
GDN	General declaration number Number of the declaration of incoming goods out of a vessel.
MB	Master bill of lading number Reference number assigned to a master bill of lading, see: 1001 = 704.
PK	Packing list number (1014) Reference number assigned to a packing list, see: 1001 = 271.

<b>1154</b>	<b>Reference number</b>	<b>C</b>	<b>an..35</b>	<b>O</b>	Identification number the nature and function of which can be qualified by an entry in data element 1153 Reference qualifier.
<b>1156</b>	<b>Line number</b>	<b>C</b>	<b>an..6</b>	<b>X</b>	Number of the line in the document/message referenced in 1154 Reference number.
<b>4000</b>	<b>Reference version number</b>	<b>C</b>	<b>an..35</b>	<b>X</b>	To uniquely identify a reference by its revision number.

**Segment:** **FTX** Free Text  
**Position:** 0320  
**Group:** SG6  
**Level:** 2  
**Usage:** Conditional (Required)  
**Max Use:** 1  
**Purpose:** A segment to provide the goods description.  
**Dependency Notes:**  
**Semantic Notes:**  
**Comments:**

**Notes:** This segment is used in order to inform the agent about the status of the Customs Summary Declaration. Use code list given in the first DE:4440.  
 Example: Declaration pending  
 FTX+CUS+++PEN'

**Data Element Summary**

<u>Data Element</u>	<u>Component Element</u>	<u>Name</u>	<u>Base Attributes</u>	<u>User Attributes</u>
4451		<b>TEXT SUBJECT QUALIFIER</b> Code specifying subject of a free text. CUS Customs declaration information Note contains customs declaration information.	<b>M an..3</b>	<b>M</b>
4453		<b>TEXT FUNCTION, CODED</b> Code specifying how to handle the text.	<b>C an..3</b>	<b>X</b>
C107		<b>TEXT REFERENCE</b> Coded reference to a standard text and its source.	<b>C</b>	<b>X</b>
	4441	<b>Free text identification</b> Free text in coded form.	<b>M an..17</b>	<b>X</b>
	1131	<b>Code list qualifier</b> Identification of a code list.	<b>C an..3</b>	<b>X</b>
	3055	<b>Code list responsible agency, coded</b> Code identifying the agency responsible for a code list.	<b>C an..3</b>	<b>X</b>
C108		<b>TEXT LITERAL</b> Free text; one to five lines.	<b>C</b>	<b>O</b>
	4440	<b>Free text</b> Free text field available to the message sender for information. ACT Active After the actual arrival of the means of transport and all provided data is valid. ANU Annulled Document nullified. DES Expanded	<b>M an..70</b>	<b>M</b>

Common Platform - Manifest Response Message Format - Version 1.2c

			Document was segregated in several parts.
	FIN		Finalized After all goods were accounted or finalized.
	PEN		Pending After the actual arrival of the means of transport, but data provided by the agent is not completely valid (e.g. some information is missing or incorrect) for at least one good's item.
	PRV		Provisional Before the actual arrival of means of transport.
<b>4440</b>	<b>Free text</b>	<b>C an..70</b>	<b>X</b> Free text field available to the message sender for information.
<b>4440</b>	<b>Free text</b>	<b>C an..70</b>	<b>X</b> Free text field available to the message sender for information.
<b>4440</b>	<b>Free text</b>	<b>C an..70</b>	<b>X</b> Free text field available to the message sender for information.
<b>4440</b>	<b>Free text</b>	<b>C an..70</b>	<b>X</b> Free text field available to the message sender for information.
<b>3453</b>	<b>LANGUAGE, CODED</b>	<b>C an..3</b>	<b>X</b> Code of language (ISO 639-1988).

**Segment:** **DTM** Date/Time/Period  
**Position:** 0350  
**Group:** SG6  
**Level:** 2  
**Usage:** Conditional (Required)  
**Max Use:** 2  
**Purpose:** A segment identifying necessary dates.  
**Dependency Notes:**  
**Semantic Notes:**  
**Comments:**

**Notes:** This segment is to send the Date/Time of the Customs Summary Declaration (DE:2005='150') and the Date/Time of the acceptance of the Transport Document by Customs (DE:2005='154'). So this segment shall occur twice.

Example: Transport Document accepted at 2004/01/20 at 15h17.

DTM+154:200401201517:203'

Example: Above example but providing timezone information. Attention that in this case the defined escape character must be used in the date/time format, if the time zone is positive in relation to GMT. If the escape character is '?' then

DTM+154:200401201517?+00:303'

Example: Declaration issued on 2004/01/20 at 15h25.

DTM+150:200401201525:203'

Example: Above example but providing timezone information. Attention that in this case the defined escape character must be used in the date/time format, if the time zone is positive in relation to GMT. If the escape character is '?' then

DTM+150:200401201525?+00:303'

### Data Element Summary

<u>Data Element</u>	<u>Component Element</u>	<u>Name</u>	<u>Base Attributes</u>	<u>User Attributes</u>
C507		<b>DATE/TIME/PERIOD</b>	<b>M</b>	<b>M</b>
		Date and/or time, or period relevant to the specified date/time/period type.		
	<b>2005</b>	<b>Date/time/period qualifier</b>	<b>M an..3</b>	<b>M</b>
		Code giving specific meaning to a date, time or period.		
		150 Declaration/presentation date		
		Date when item has been or has to be declared/presented.		
		154 Acceptance date of document		
	<b>2380</b>	<b>Date/time/period</b>	<b>C an..35</b>	<b>O</b>
		The value of a date, a date and time, a time or of a period in a specified representation.		
	<b>2379</b>	<b>Date/time/period format qualifier</b>	<b>C an..3</b>	<b>O</b>

Common Platform - Manifest Response Message Format - Version 1.2c

Specification of the representation of a date, a date and time or of a period.

203	CCYYMMDDHHMM
	Calendar date including time with minutes: C=Century; Y=Year; M=Month; D=Day; H=Hour; M=Minutes.
303	CCYYMMDDHHMMZZZ
	See 203 plus Z=Time zone.

**Group:** **ERP** Segment Group 12: Error Point Details  
**Position:** 0560  
**Group:** Segment Group 6 (Document/Message Details) Conditional (Required)  
**Level:** 2  
**Usage:** Conditional (Required)  
**Max Use:** 9999  
**Purpose:** A group of segments identifying an application error condition related only to a part of the message.

**Segment Summary**

	<b>Pos.</b>	<b>Seg.</b>		<b>Req.</b>	<b>Max.</b>	<b>Group:</b>
	<b><u>No.</u></b>	<b><u>ID</u></b>	<b><u>Name</u></b>	<b><u>Des.</u></b>	<b><u>Use</u></b>	<b><u>Repeat</u></b>
M	0570	ERP	Error Point Details	M	1	
O	0580	RFF	Reference	C	1	
O	0590	ERC	Application Error Information	C	1	
O	0600	FTX	Free Text	C	3	



**Segment:** **ERP** Error Point Details

**Position:** 0570 (Trigger Segment)

**Group:** SG6-SG12

**Level:** 2

**Usage:** Mandatory

**Max Use:** 1

**Purpose:** A segment identifying the location of an application error.

**Dependency Notes:**

**Semantic Notes:**

**Comments:**

**Notes:** This segment identifies the point in the document to which the error in segment ERC refers to. The point can be the header of the manifest, or one transport document referred in the manifest, or one of the goods presented in a certain transport document, or one of a transport equipment presented in a certain transport document.

When reporting business errors, DE:1054 is not used.

When referring to the manifest's header, the identification will be the reference given in segment RFF of segment group 1 of the IFCSUM message. This identification will be present in DE:1052.

When referring to a transport document, the identification will be the reference given in segment RFF of segment group 26 inside segment group 19 of the IFCSUM message. This identification will be present in DE:1052.

When referring to a particular good, the identification will be the sequential number given in segment GID in segment group 41 inside segment group 19 of the IFCSUM message. This identification will be present in DE:1052. The transport document where the goods are described is identified in the RFF segment of segment group 6.

When referring to a particular transport equipment, the identification will be the equipment id given in segment EQD in segment group 60 inside segment group 19 of the IFCSUM message. This identification will be present in DE:1052. The transport document where the goods are described is identified in the RFF segment of segment group 6.

When reporting syntax errors all elements in C701 will be used. DE:1049 has the same usage as the one described. DE:1052 will identify the position of the transport document in the message. DE:1054 is used when DE:1049 is '7' and will identify the position of a sub-item (goods or equipment) in the transport document.

Composite C853 is used when reporting basic errors (example, syntax).

The following three examples are related with business rules validation.

Example: Error located in manifest identified by V6657PTLEIEXP

ERP+1:V6657PTLEIEXP'

Example: Error located in the third good's section of the Transport Document XPTO8856. Note that the transport document is identified previously.

ERP+7:3'

Example: Error located in Transport Document identified by NB78566

ERP+2:NB78566'

Example: Error located in container CGTU 187589/5 in Transport Document OJS3547. Note that the transport document is identified previously.

ERP+7:CGTU1875895'

The following two examples are related with basic rules validation (example, syntax validation).

Example: Error in BL n° 2, you can read on IFCSUM guide segment group (G) 26, segment DTM in data element 2379

ERP+2:2+:G26DTM2379'

Example: Error on the 14th shipment, in 3rd transport document, you can read on ifcsum guide Group (G) 43, segment MEA and d.e. 6411

ERP+7:3:14+:G43MEA6411'

<b>Data Element Summary</b>				
<b>Data</b>	<b>Component</b>		<b>Base</b>	<b>User</b>
<b>Element</b>	<b>Element</b>	<b>Name</b>	<b>Attributes</b>	<b>Attributes</b>
<b>C701</b>		<b>ERROR POINT DETAILS</b>	<b>C</b>	<b>O</b>
		Indication of the point of error in a message.		
	<b>1049</b>	<b>Message section, coded</b>	<b>C an..3</b>	<b>O</b>
		Recognition of a particular part of a message.		
		1            Heading section		
		Description to be provided.		
		2            Detail section of a message		
		Description to be provided.		
		7            Sub-line item		
	<b>1052</b>	<b>Message item number</b>	<b>C an..35</b>	<b>O</b>
		The referenced number allocated to an identifiable item in a message. eg Customs item or invoice item.		
	<b>1054</b>	<b>Message sub-item number</b>	<b>C n..6</b>	<b>O</b>
		The reference number allocated to an identifiable sub-item in a message. eg: invoice line number.		
<b>C853</b>		<b>ERROR SEGMENT POINT DETAILS</b>	<b>C</b>	<b>O</b>
		To indicate the exact segment location of an application error within a message.		
	<b>9166</b>	<b>Segment tag</b>	<b>C an..3</b>	<b>O</b>

Common Platform - Manifest Response Message Format - Version 1.2c

	Tag of a segment.			
<b>1050</b>	<b>Sequence number</b>	<b>C</b>	<b>an..10</b>	<b>O</b>
	Number indicating the position in a sequence.			
<b>1159</b>	<b>Sequence number source, coded</b>	<b>C</b>	<b>an..3</b>	<b>X</b>
	Specification of the source for a specified sequence number in a coded form.			

**Segment:** **RFF** Reference  
**Position:** 0580  
**Group:** SG6-SG12  
**Level:** 3  
**Usage:** Conditional (Optional)  
**Max Use:** 1  
**Purpose:** A segment to provide the references related to the application error.  
**Dependency Notes:**  
**Semantic Notes:**  
**Comments:**  
**Notes:** The segment is used to report the identification given by Customs to each goods items. This identification is structured like this:

- UN/Locode: 5 characters
- customs office code: 3 digits
- mode of transport code (UN/ECE Rec. 19 - 1 Maritime): 1 digit
- year: 4 digits
- sequential number: 6 digits left padded with zeros
- id of the Customs Summary Declaration: 4 digits left padded with zeros
- id of the good's item: 2 digits left padded with zeros

It is recommended that the maximum size for this data element 1154 should be considered.

Example: Customs good's identification 7 in Summary Declaration 45 associated with Customs vessel process id 12 from Leixoes Customs Office

RFF+IB:PTLEI34012004000012004507'

**Data Element Summary**

<u>Data Element</u>	<u>Component Element</u>	<u>Name</u>	<u>Base Attributes</u>	<u>User Attributes</u>
C506		REFERENCE	M	M
		Identification of a reference.		
	1153	Reference qualifier	M an..3	M
		Code giving specific meaning to a reference segment or a reference number.		
		IB In bond number		
		Customs assigned number that is used to control the movement of imported cargo prior to its formal Customs clearing.		
	1154	Reference number	C an..35	O
		Identification number the nature and function of which can be qualified by an entry in data element 1153 Reference qualifier.		
	1156	Line number	C an..6	X
		Number of the line in the document/message referenced in 1154 Reference number.		
	4000	Reference version number	C an..35	X
		To uniquely identify a reference by its revision number.		

**Segment:** **ERC** **Application Error Information**  
**Position:** 0590  
**Group:** SG6-SG12  
**Level:** 3  
**Usage:** Conditional (Optional)  
**Max Use:** 1  
**Purpose:** A segment identifying the type of application errors.  
**Dependency Notes:**  
**Semantic Notes:**  
**Comments:**

**Notes:** This segment is used to report the code value associated with the condition verified.

Example: Condition associated with code DEC04067

ERC+DEC04067'

#### Data Element Summary

<u>Data Element</u>	<u>Component Element</u>	<u>Name</u>	<u>Base Attributes</u>	<u>User Attributes</u>
C901		<b>APPLICATION ERROR DETAIL</b>	<b>M</b>	<b>M</b>
		Code assigned by the recipient of a message to indicate a data validation error condition.		
	9321	<b>Application error identification</b>	<b>M an..8</b>	<b>M</b>
		The code assigned by the receiver of a message to the identification of a data validation error condition.		
		Code List will be provided in a separate document.		
	1131	<b>Code list qualifier</b>	<b>C an..3</b>	<b>X</b>
		Identification of a code list.		
	3055	<b>Code list responsible agency, coded</b>	<b>C an..3</b>	<b>X</b>
		Code identifying the agency responsible for a code list.		

**Segment:** **FTX** Free Text  
**Position:** 0600  
**Group:** SG6-SG12  
**Level:** 3  
**Usage:** Conditional (Optional)  
**Max Use:** 3  
**Purpose:** A segment to provide explanation and/or supplementary information related to the specified application error.

**Dependency Notes:**

**Semantic Notes:**

**Comments:**

**Notes:** This segment is used to send the textual description of the error and to inform the Customs status of the goods item.

The error description will be given in Portuguese (DE:3453='PT') and in English (DE:3453='EN'). In this case DE:4451 is 'AAO'.

The status will be given by a code in DE:4440. In this case DE:4451 is 'CUS'. Only in this case the code list in first DE:4440 will apply. DE:3453 is no needed.

So the segment occurs three times in each occurrence of group 12..

Example: Incorrect type of package.

FTX+AAO+++INCORRECT TYPE OF PACKAGE+EN'

Example: Goods item finalized.

FTX+CUS+++FIN'

**Data Element Summary**

<u>Data Element</u>	<u>Component Element</u>	<u>Name</u>	<u>Base Attributes</u>	<u>User Attributes</u>
4451		<b>TEXT SUBJECT QUALIFIER</b> Code specifying subject of a free text.	<b>M an..3</b>	<b>M</b>
	AAO	Error description (free text)		
		Error described by a free text.		
	CUS	Customs declaration information Note contains customs declaration information.		
4453		<b>TEXT FUNCTION, CODED</b> Code specifying how to handle the text.	<b>C an..3</b>	<b>X</b>
C107		<b>TEXT REFERENCE</b> Coded reference to a standard text and its source.	<b>C</b>	<b>X</b>
	4441	<b>Free text identification</b> Free text in coded form.	<b>M an..17</b>	<b>X</b>
	1131	<b>Code list qualifier</b>	<b>C an..3</b>	<b>X</b>

Common Platform - Manifest Response Message Format - Version 1.2c

		Identification of a code list.		
	<b>3055</b>	<b>Code list responsible agency, coded</b>	<b>C an..3</b>	<b>X</b>
		Code identifying the agency responsible for a code list.		
<b>C108</b>		<b>TEXT LITERAL</b>	<b>C</b>	<b>O</b>
		Free text; one to five lines.		
	<b>4440</b>	<b>Free text</b>	<b>M an..70</b>	<b>M</b>
		Free text field available to the message sender for information.		
		ACT Active		
		After the actual arrival of the means of transport and all provided data is valid.		
		ANU Annulled		
		Data about the good's item was nullified.		
		APU Accounted		
		Good's item was accounted.		
		CAT Captive		
		DES Expanded		
		Data about the good's item was segregated in several parts.		
		FIN Finalized		
		When the goods are not subject to Customs formalities and after the actual arrival of the transport means.		
		PEN Pending		
		After the actual arrival of the means of transport, but data provided by the agent is not completely valid (e.g. some information is missing or incorrect) for one goods item at least.		
		PRV Provisional		
		Before the actual arrival of means of transport.		
	<b>4440</b>	<b>Free text</b>	<b>C an..70</b>	<b>O</b>
		Free text field available to the message sender for information.		
	<b>4440</b>	<b>Free text</b>	<b>C an..70</b>	<b>O</b>
		Free text field available to the message sender for information.		
	<b>4440</b>	<b>Free text</b>	<b>C an..70</b>	<b>O</b>
		Free text field available to the message sender for information.		
	<b>4440</b>	<b>Free text</b>	<b>C an..70</b>	<b>O</b>
		Free text field available to the message sender for information.		
<b>3453</b>		<b>LANGUAGE, CODED</b>	<b>C an..3</b>	<b>O</b>
		Code of language (ISO 639-1988).		
		EN English		
		PT Portuguese		

**Segment:** **UNT** Message Trailer  
**Position:** 0650  
**Group:**  
**Level:** 0  
**Usage:** Mandatory  
**Max Use:** 1  
**Purpose:** A service segment ending a message, giving the total number of segments in the message and the control reference number of the message.

**Dependency Notes:**

**Semantic Notes:**

**Comments:**

**Notes:** Example: 26 sent segment, reference 1357924680

UNT+26+1357924680'

**Data Element Summary**

<u>Data Element</u>	<u>Component Element</u>	<u>Name</u>	<u>Base Attributes</u>	<u>User Attributes</u>
0074		NUMBER OF SEGMENTS IN A MESSAGE Control count of number of segments in a message.	M n..6	M
0062		MESSAGE REFERENCE NUMBER Unique message reference assigned by the sender.	M an..14	M